



STEM CELL LABORATORY (STCL)



DOCUMENT NUMBER: FLOW-GEN-041 JA1

DOCUMENT TITLE:

FACSCanto II Instrument Startup

DOCUMENT NOTES:

Document Information

Revision: 01

Vault: FLOW-General-rel

Status: Release

Document Type: FLOW SOPs

Date Information

Creation Date: 04 Dec 2018

Release Date: 07 Feb 2019

Effective Date: 07 Feb 2019

Expiration Date:

Control Information

Author: MGREESE

Owner: MGREESE

Previous Number: None

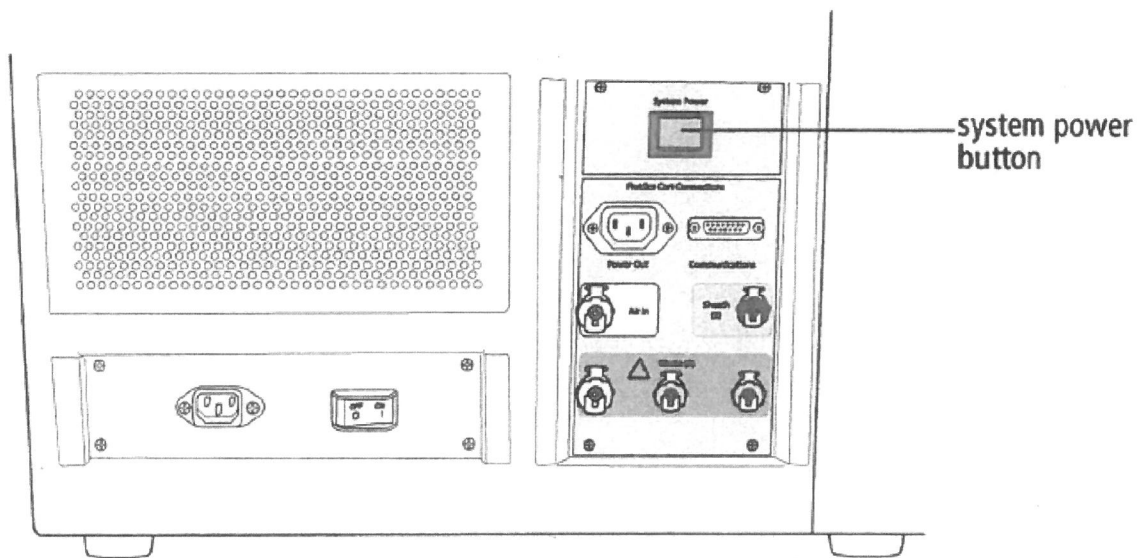
Change Number: STCL-CCR-436

FLOW-GEN-041 JA1 FACSCanto II Instrument Startup

Cytometer Startup

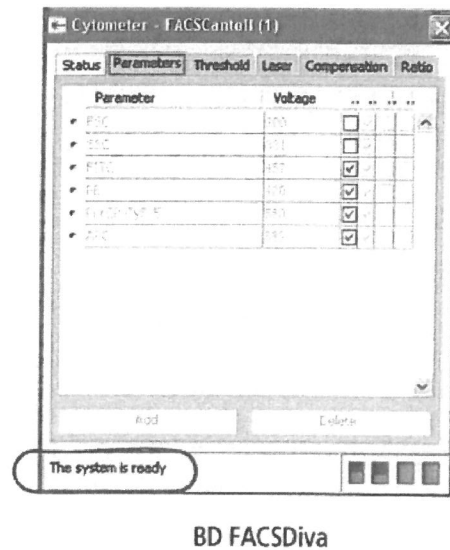
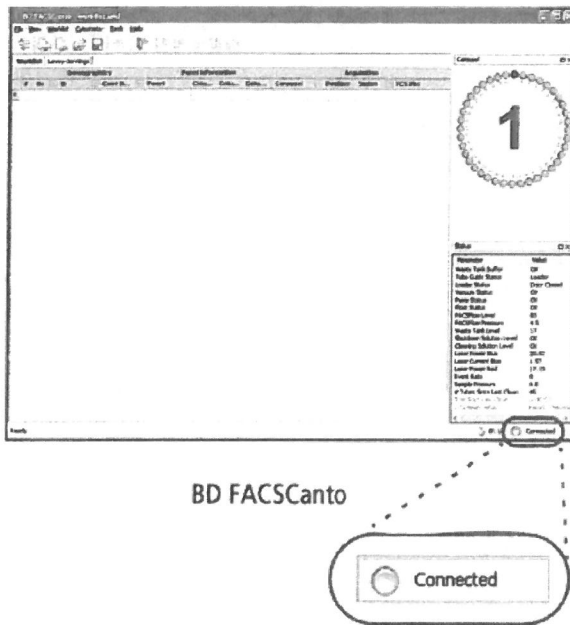
- 1 Turn on the power to the cytometer.

Figure 4-1 Flow cytometer power panel



The system power button turns on power to the cytometer, fluidics cart, and lasers.

- 2 Start up the computer, start the software, and log on.
- 3 Make sure the software is connected to the cytometer.



If needed, select Cytometer > Connect.

4 Check fluid levels.

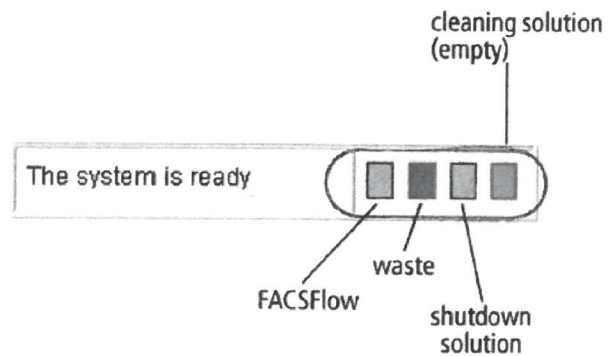
Low fluid levels or a full waste container is indicated in red.

Status	
Parameter	Value
Waste Tank Buffer	OK
Tube Guide Status	Loader
Loader Status	Door Closed
Vacuum Status	OK
Pump Status	OK
Float Status	OK
FACSFlow Level	17
FACSFlow Pressure	4.5
Waste Tank Level	83
Shutdown Solution Level	OK
Cleaning Solution Level	OK
Laser Power Blue	20.02
Laser Current Blue	1.57
Laser Power Red	17.19
Event Rate	0
Sample Pressure	4.8
# Tubes Since Last Clean	36
Time Since Last Clean	00:02
Cytometer Setup	Failed, 00:02

Detectors	
-----------	--

00:15 Error

BD FACSCanto



BD FACSDiva

5 If fluidics startup does not start automatically, select Cytometer > Fluidics Startup.



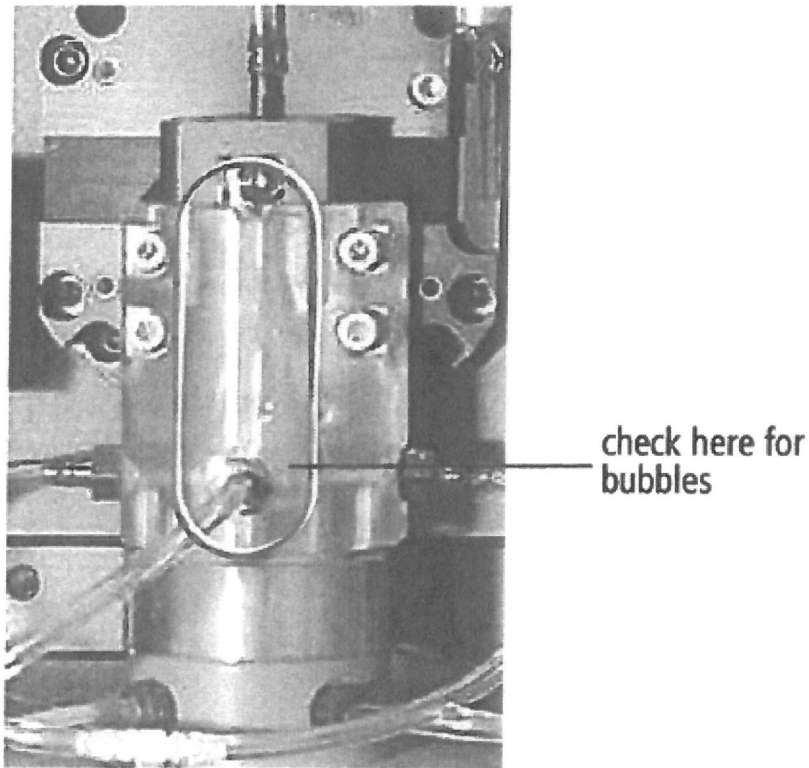
To prevent fluid overflow, make sure there is no tube on the SIT at startup.

6 Click OK at the confirmation dialog.

7 When Fluidics Startup finishes, click OK to close the dialog.

- 8 Lift the flow cell access door to check the flow cell for air bubbles.

Figure 4-2 Flow cell



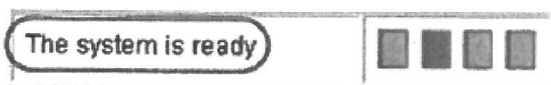
- If you see bubbles, select Cytometer > Cleaning Modes > De-gas Flow Cell.
- Click OK when the completion message appears.
- If you still see bubbles, repeat.

If an error message appears when you open the flow cell access door, close the message by closing the door and waiting 30 seconds.

- 9 Check that laser warmup has finished.



BD FACSCanto



BD FACSDiva

Signature Manifest**Document Number:** FLOW-GEN-041 JA1**Revision:** 01**Title:** FACSCanto II Instrument Startup

All dates and times are in Eastern Time.

FLOW-GEN-041 JA1 FACSCanto II Instrument Startup**Author**

Name/Signature	Title	Date	Meaning/Reason
Melissa Reese (MGREESE)		14 Dec 2018, 02:32:27 PM	Approved

Management

Name/Signature	Title	Date	Meaning/Reason
Barbara Waters-Pick (WATE02)		14 Dec 2018, 03:03:38 PM	Approved

Medical Director

Name/Signature	Title	Date	Meaning/Reason
Joanne Kurtzberg (KURTZ001)		14 Dec 2018, 06:03:28 PM	Approved

Quality

Name/Signature	Title	Date	Meaning/Reason
Bing Shen (BS76)			
Lisa Eddinger (LE42)			
Taylor Orr (TSO4)			
Richard Bryant (RB232)		17 Dec 2018, 09:23:51 AM	Approved

Document Release

Name/Signature	Title	Date	Meaning/Reason
Sandy Mulligan (MULLI026)		06 Feb 2019, 07:40:46 PM	Approved